



Rev. 09/01/17

## Features & Options

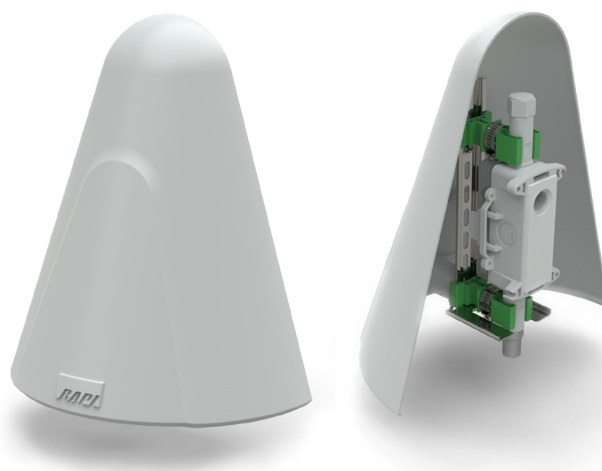
- Improves the Accuracy of BAPI Outside Air Sensors by Blocking Solar Heat Gain
- Simple and Sturdy Mounting Method

External temperature, humidity and air quality sensors can be affected by solar heat gain. The BAPI Weather Shade effectively blocks the solar heat gain, improving the accuracy of the sensor.

The shape of the cone and spacing from the wall creates a chimney which draws radiant heat from solar gain away from the sensor. The “domed” top also prevents bird nesting while the smooth surface minimizes hosting of insects.

The Weather Shade is constructed of solar stabilized plastic to ensure a long, corrosion-free life. The material also has a high reflectivity rating (87%) and low emissivity rating (0.90) to minimize the radiant heat created from solar gain. Besides blocking solar heat gain, the shade also protects the probe filter from precipitation and grit, extending the life of the filter.

The Weather Shade offers the easiest assembly available on the market. It mounts quickly and securely to the BAPI-Box, BAPI-Box 2 and BAPI EU enclosures using capped tubes that thread into the enclosures. The pre-assembled Weather Shade Kit includes a shade and din rail bracket, two capped mount tubes, one adjustable clamp and one adjustable clamp with retention plate.



**Weather Shade, front and back view.**  
(Back view is shown mounted to a BAPI outside air humidity sensor.)

## Ordering Information

<u>Part Number</u>	<u>Description</u>
<b>BA/WSK</b> .....	Weather Shade Kit. (Includes a pre-assembled shade and din rail bracket, two capped mount tubes, one adjustable clamp and one adjustable clamp with retention plate.) <i>See end of Section E for list pricing.</i>

## Specifications

### Shade Material:

UV-stabilized Polycarbonate

### Shade Material Ratings:

Flammability: UL 94  
Reflectivity: 87%  
Emissivity: 0.90

